

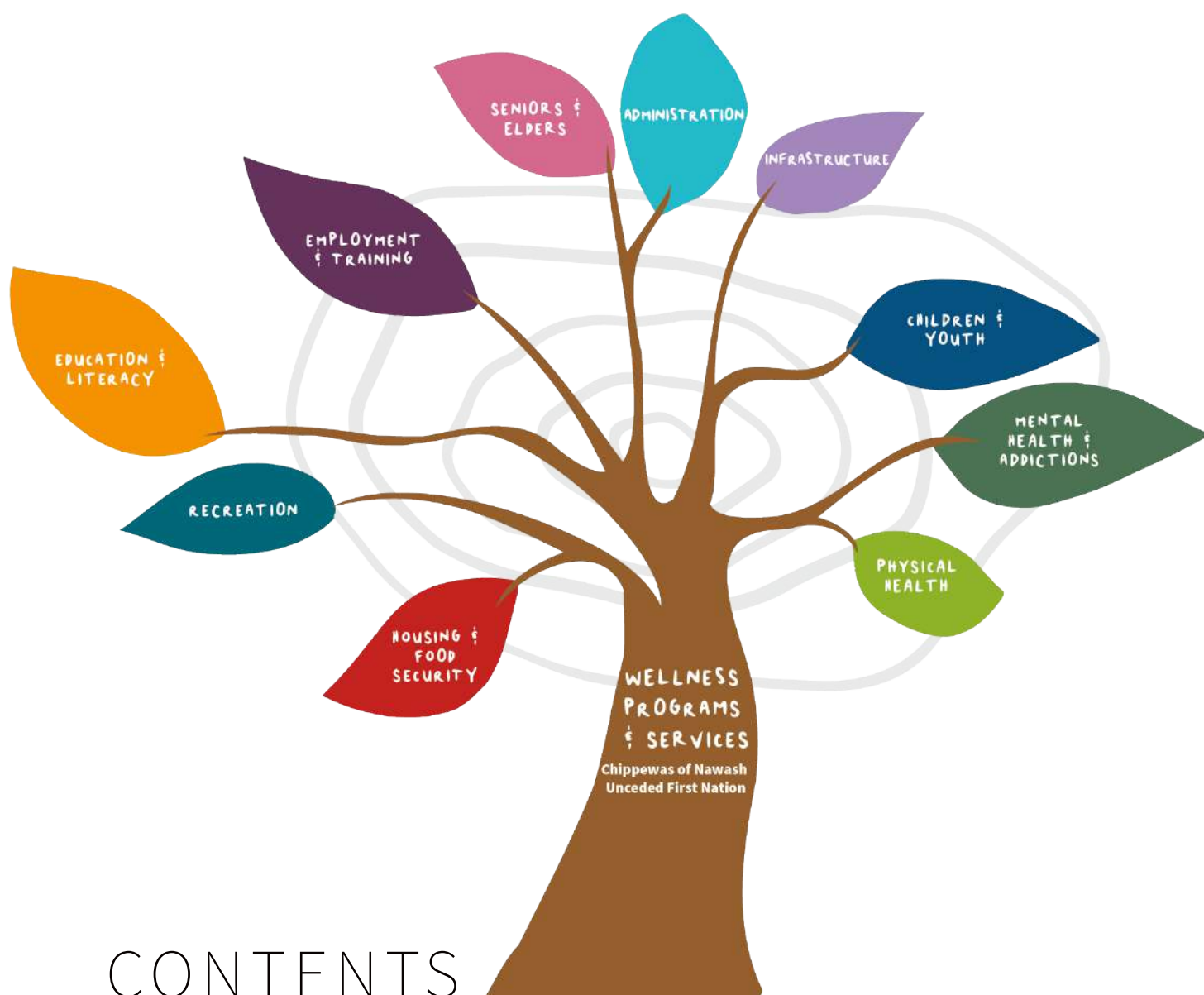


DIRECTORY OF WELLNESS PROGRAMS & SERVICES

CHIPPEWAS OF NAWASH
UNCEDDED FIRST NATION

2023





CONTENTS

LIST OF PROGRAMS AND SERVICES BY CATEGORY.....	4
COMPLETE LIST OF PROGRAMS AND SERVICES.....	35
APPENDIX A: PROGRAMS AND SERVICES ORGANIZED BY LIFE STAGE.....	48
APPENDIX B: CASE STUDIES.....	50

More
information:



LEGEND



SERVICE / PROGRAM PROVISION



LAND-BASED PROGRAMMING



PHYSICAL / CLINICAL HEALTH



MENTAL HEALTH AND WELLBEING



CULTURAL WELLBEING



EDUCATION



FINANCIAL SERVICES / SUPPORT



ENVIRONMENTAL WELLBEING



SUPPORT FOR CAREGIVERS



PREVENTATIVE CARE / PROGRAMMING

LIST OF PROGRAMS AND SERVICES BY CATEGORY

HOUSING AND FOOD SECURITY.....	5
RECREATION.....	7
EDUCATION AND LITERACY.....	10
EMPLOYMENT AND TRAINING.....	13
SENIORS AND ELDERS.....	16
CHILDREN AND YOUTH.....	19
ADMINISTRATION.....	23
INFRASTRUCTURE.....	25
MENTAL HEALTH AND ADDICTIONS.....	27
PHYSICAL HEALTH.....	32



HOUSING & FOOD SECURITY

LEGEND



SERVICE / PROGRAM
PROVISION



LAND-BASED
PROGRAMMING



PHYSICAL / CLINICAL
HEALTH



MENTAL HEALTH
AND WELLBEING



CULTURAL WELLBEING



EDUCATION



FINANCIAL SERVICES /
SUPPORT



ENVIRONMENTAL
WELLBEING



SUPPORT FOR
CAREGIVERS



PREVENTATIVE CARE /
PROGRAMMING

NAWASH SOCIAL SERVICES



33 Maadookii Cres., Suite 105

Neyaashiinigiing, ON N0H 2T0

T: 519-534-3753 | F: 519-534-1501 | E: clientsupport@nawashfn.ca

Administers the following programs, services, and supports:

- *Ontario Works program, which offers social assistance to those in financial need, and other employment services;*
- *Addiction Services Initiative, which offers life stabilization and employment supports to individuals on Social Assistance struggling with addiction;*
- *support for individuals seeking Ontario Disability Support Program (ODSP);*
- *services for budgeting and job training;*
- *transitional support funding for low-income, on-reserve households with housing disconnections and minor repairs; and*
- *financial support for funerals and burials.*

FAMILY WELLBEING PROGRAM



519-534-4445

Provides prevention-focused supports to reduce violence, reduce Indigenous youth going into Child Welfare Services, and improve the wellbeing of the community. Offers a variety of services such as:

- **navigation/outreach:** short term direct support to individuals/families, focussed on finding and accessing appropriate supports/services to support a family centred system of care;
- **referrals:** on- and off-reserve services;
- **information sharing:** new and current services and resources;
- **community relationship building:** volunteer opportunities; feasts; gatherings; special outings and activities;
- **partnership programming:** supports a family centred system of care by bringing the best possible opportunities to families (i.e, parenting skills; family activities; skill building workshops, etc.);
- **land-based and cultural learning:** gardening and preserving skills; medicine gathering; traditional harvesting skills and demonstrations; traditional crafting skills; outdoor cooking, etc.; and
- **coordination of community awareness and prevention campaigns:** violence prevention; safe communities (i.e., Missing/Murdered Indigenous Women/Girls, Indian Residential Schools, Addictions Awareness, Human Trafficking awareness/prevention, etc.).

Check for upcoming events on our Facebook page.

HOUSING & FOOD SECURITY

LEGEND



SERVICE / PROGRAM
PROVISION



LAND-BASED
PROGRAMMING



PHYSICAL / CLINICAL
HEALTH



MENTAL HEALTH
AND WELLBEING



CULTURAL WELLBEING



EDUCATION



FINANCIAL SERVICES /
SUPPORT



ENVIRONMENTAL
WELLBEING



SUPPORT FOR
CAREGIVERS



PREVENTATIVE CARE /
PROGRAMMING

HOUSING

229-33 Maadookii Cres.
Neyaashiinigmiing, ON N0H 2T0
519-534-1195

The purpose of the Housing Department is to ensure an improved housing program and future housing allocations. Services include:

- *recommendations regarding housing needs;*
- *overseeing construction of Band rental units as well as maintenance of Band rental units;*
- *supervision of any employees hired to carry out work;*
- *receipting of monies from mortgages/Band rentals;*
- *financial counselling;*
- *home inspections (mold, structural); and*
- *recommendations for septic.*

FOOD BANK

Seniors Centre: 519-534-4918
Nshiime Child & Family Centre: 519-534-3909

The Food Bank provides food/staples/basics to families and persons of the Chippewas of Nawash community. The volunteer team fills requests for emergency foods based on family size also. This program is a member of the Ontario Food Bank Association and organizes the Christmas Food Hamper drive for families in the greater needs holiday season. The Food Bank provides community lunches/meals as well as clothing, bedding, furniture, and emergency needs.

RECREATION

LEGEND



SERVICE / PROGRAM
PROVISION



LAND-BASED
PROGRAMMING



PHYSICAL / CLINICAL
HEALTH



MENTAL HEALTH
AND WELLBEING



CULTURAL WELLBEING



EDUCATION



FINANCIAL SERVICES /
SUPPORT



ENVIRONMENTAL
WELLBEING



SUPPORT FOR
CAREGIVERS



PREVENTATIVE CARE /
PROGRAMMING

FAMILY WELLBEING PROGRAM



519-534-4445

Provides prevention-focused supports to reduce violence, reduce Indigenous youth going into Child Welfare Services, and improve the wellbeing of the community. Offers a variety of services such as:

- *navigation/outreach: short term direct support to individuals/families, focussed on finding and accessing appropriate supports/services to support a family centred system of care;*
- *referrals: on- and off-reserve services;*
- *information sharing: new and current services and resources;*
- *community relationship building: volunteer opportunities; feasts; gatherings; special outings and activities;*
- *partnership programming: supports a family centred system of care by bringing the best possible opportunities to families (i.e, parenting skills; family activities; skill building workshops, etc.);*
- *land-based and cultural learning: gardening and preserving skills; medicine gathering; traditional harvesting skills and demonstrations; traditional crafting skills; outdoor cooking, etc.; and*
- *coordination of community awareness and prevention campaigns: violence prevention; safe communities (i.e., Missing/Murdered Indigenous Women/Girls, Indian Residential Schools, Addictions Awareness, Human Trafficking awareness/prevention, etc.).*

Check for upcoming events on our Facebook page.

NSHIIME CHILD & FAMILY CENTRE



255 Prairie Rd.

Neyaashiinigmiing, ON N0H 2T0

519-534-3909

Provides daycare and other programming such as:

- *Journey Together: programming helping families of children 0-6;*
- *organizing community events;*
- *supporting early childhood educators and others who work with children ages 0-6;*
- *hosting a parenting group;*
- *partnering with a youth group that meets regularly; and*
- *child assessments.*

RECREATION

LEGEND



SERVICE / PROGRAM
PROVISION



LAND-BASED
PROGRAMMING



PHYSICAL / CLINICAL
HEALTH



MENTAL HEALTH
AND WELLBEING



CULTURAL WELLBEING



EDUCATION



FINANCIAL SERVICES /
SUPPORT



ENVIRONMENTAL
WELLBEING



SUPPORT FOR
CAREGIVERS



PREVENTATIVE CARE /
PROGRAMMING

MAADOOKII SENIOR'S GROUP



**125 Maadookii Cres.
Neyaashiinigmiing, ON N0H 2T0
519-534-4918**

The Maadookii Centre offers services and activities for seniors, including:

- home visits;
- snow removal and light repairs
- Native crafts;
- games (cards, bingo, scrabble) & entertainment;
- socials and other gatherings;
- day trips (the Centre has its own wheel-chair accessible bus);
- Ojibway language classes;
- support to travel to language conferences; and
- interaction with other people and programs on reserve.

M'WIKWEDONG INDIGENOUS FRIENDSHIP CENTRE



**1045 3rd Ave. West
Owen Sound, ON N4K 5W6
519-371-1147**

M'Wikwedong has several programs that cover a variety of ages, including prenatal care, infants, children, pre-teens, and elders.

RECREATION



519-379-0920

Increases participation opportunities by supporting communities to provide sport, recreation and physical activity programs suitable to the needs and interests of all.

Increases community capacity by providing skill development and leadership development opportunities to members of the community.

RECREATION

LEGEND



SERVICE / PROGRAM
PROVISION



LAND-BASED
PROGRAMMING



PHYSICAL / CLINICAL
HEALTH



MENTAL HEALTH
AND WELLBEING



CULTURAL WELLBEING



EDUCATION



FINANCIAL SERVICES /
SUPPORT



ENVIRONMENTAL
WELLBEING



SUPPORT FOR
CAREGIVERS



PREVENTATIVE CARE /
PROGRAMMING

NATIVE CHILD WELFARE



23 Lighthouse Rd.

Neyaashiinigmiing, ON N0H 2T0

519-534-3818

Community-based early intervention, and prevention services, including: placements for children in need; land-based programming for spiritual, mental, physical, and emotional wellbeing; and support programs for children, youth and their caregivers.

Offers a variety of youth programming such as:

- *teen drop-in nights;*
- *education on culture, spirituality, physical health, and mental health;*
- *parent support circle;*
- *support to substitute parents; and*
- *support to foster parents.*

WELLNESS CENTRE



Temporary Location:

Health Centre, 247 Prairie Rd.

Neyaashiinigmiing, ON N0H 2T0

519-534-3764

Permanent Location:

376 Sydney Bay Rd.

Neyaashiinigmiing, ON N0H 2T0

519-534-0373

Offers preventative programs and crisis intervention through:

- *individual and group sessions;*
- *mental health and addictions supports and referrals;*
- *mental health and addiction education;*
- *access to outside supports such as residential treatment, detox, and hospital supports;*
- *cultural mentoring and supports;*
- *traditional medicine supplies and supports;*
- *school visits and counselling supports for children and youth;*
- *social events; and*
- *traditional crafting sessions.*

LEGEND



SERVICE / PROGRAM
PROVISION



LAND-BASED
PROGRAMMING



PHYSICAL / CLINICAL
HEALTH



MENTAL HEALTH
AND WELLBEING



CULTURAL WELLBEING



EDUCATION



FINANCIAL SERVICES /
SUPPORT



ENVIRONMENTAL
WELLBEING



SUPPORT FOR
CAREGIVERS



PREVENTATIVE CARE /
PROGRAMMING

EDUCATION &
LITERACY

ADULT LEARNING CENTRE

33 Maadookii Crescent, Suite 105

Neyaashiinigmiing, ON N0H 2T0

T: 519-534-5092 | C: 519-477-4667 | E: literacy@gbtel.ca

Administers the Ontario Literacy and Basic Skills Program, which helps adults in Ontario to develop and apply communication, numeracy, interpersonal and digital skills to achieve their goals. This program also helps adults with successful transition to employment, postsecondary, apprenticeship, secondary school, and increased independence.

The Adult Learning Centre also offers access to photocopying, printers, and computers for purposes of independence and employment.

DEPARTMENT OF EDUCATION

6 Harbour Road

Neyaashiinigmiing, ON N0H 2T0

519-534-0882

Provides a range of supports and services, including:

- *options for post-secondary education information;*
- *education diversity assistance program;*
- *interest and concerns related to education;*
- *mental health services;*
- *goal planning for student success;*
- *supports for post-secondary students; and*
- *supports and counselling for secondary students.*

LEGEND



SERVICE / PROGRAM
PROVISION



LAND-BASED
PROGRAMMING



PHYSICAL / CLINICAL
HEALTH



MENTAL HEALTH
AND WELLBEING



CULTURAL WELLBEING



EDUCATION



FINANCIAL SERVICES /
SUPPORT



ENVIRONMENTAL
WELLBEING



SUPPORT FOR
CAREGIVERS



PREVENTATIVE CARE /
PROGRAMMING

EDUCATION & LITERACY

● KIKENDAASOGAMIG ELEMENTARY SCHOOL



45 Farm Rd.

Neyaashiinigmiing, ON N0H 2T0

519-534-0719

Provides the following services and supports from Junior Kindergarten - Grade 8:

- *Ojibway language instruction;*
- *support for incorporating cultural education;*
- *wide range of special education support;*
- *“Daily Breakfast” and “Hot Lunch” programs for the winter months;*
- *land-based learning; and*
- *locally-developed social studies curriculum.*

● LANGUAGE NEST



6 Harbour Road

Neyaashiinigmiing, ON N0H 2T0

519-534-3572

Anishinaabemowin Naaknigewin was established in 2011 with the mandate of helping to develop a multi-year strategic plan for the promotion and revitalization of our Indigenous Language and skills.

● NINDA-KIKAENDJIGAE-WIGAMMIK LIBRARY



25 Maadookii Subdivision

Neyaashiinigmiing, ON N0H 2T0

519-534-1508

In partnership with other community programs, our public libraries contribute to our social and economic wellbeing by nurturing our spirits, preserving our traditions, cultures and languages, and encouraging lifelong learning and literacy. The library also provides mobile service.

LEGEND



SERVICE / PROGRAM
PROVISION



LAND-BASED
PROGRAMMING



PHYSICAL / CLINICAL
HEALTH



MENTAL HEALTH
AND WELLBEING



CULTURAL WELLBEING



EDUCATION



FINANCIAL SERVICES /
SUPPORT



ENVIRONMENTAL
WELLBEING



SUPPORT FOR
CAREGIVERS



PREVENTATIVE CARE /
PROGRAMMING

EDUCATION &
LITERACY

POST-SECONDARY EDUCATION SERVICES

**6 Harbour Rd.
Neyaashiinigmiing, ON N0H 2T0
519-534-0882**

Provides a funding assistance program for people attending post-secondary institutions (e.g. college, university). This program assists with post-secondary registration and helps post-secondary students troubleshoot issues regarding school. This program is offered through the Department of Education.

LEGEND



SERVICE / PROGRAM
PROVISION



LAND-BASED
PROGRAMMING



PHYSICAL / CLINICAL
HEALTH



MENTAL HEALTH
AND WELLBEING



CULTURAL WELLBEING



EDUCATION



FINANCIAL SERVICES /
SUPPORT



ENVIRONMENTAL
WELLBEING



SUPPORT FOR
CAREGIVERS



PREVENTATIVE CARE /
PROGRAMMING

EMPLOYMENT & TRAINING

COMMUNITY HEALTH

247 Prairie Rd.

Neyaashiinigmiing, ON N0H 2T0

519-534-0373

Provides education, assessments, and treatment for:

- chronic diseases;
- healthy eating, physical activity, fitness, hygiene, and daily health needs;
- sexual health, HIV/AIDS education and prevention;
- community water sampling;
- virus tracking and vaccinations for communicable diseases;
- injuries; and
- pandemic planning.

Includes programs such as:

- health education;
- mask-making for community members;
- maternal health;
- Naloxone training; and
- services for seniors.

DEPARTMENT OF EDUCATION

6 Harbour Road

Neyaashiinvvigmiing, ON N0H 2T0

519-534-0882

Provides a range of supports and services, including:

- options for post-secondary education information;
- education diversity assistance program;
- interest and concerns related to education;
- mental health services;
- goal planning for student success;
- supports for post-secondary students; and
- supports and counselling for secondary students.

LEGEND



SERVICE / PROGRAM
PROVISION



LAND-BASED
PROGRAMMING



PHYSICAL / CLINICAL
HEALTH



MENTAL HEALTH
AND WELLBEING



CULTURAL WELLBEING



EDUCATION



FINANCIAL SERVICES /
SUPPORT



ENVIRONMENTAL
WELLBEING



SUPPORT FOR
CAREGIVERS



PREVENTATIVE CARE /
PROGRAMMING

EMPLOYMENT & TRAINING

ADULT LEARNING CENTRE



33 Maadookii Crescent, Suite 105

Neyaashiinigmiing, ON N0H 2T0

T: 519-534-5092 | C: 519-477-4667 | E: literacy@gbtel.ca

Administers the Ontario Literacy and Basic Skills Program, which helps adults in Ontario to develop and apply communication, numeracy, interpersonal and digital skills to achieve their goals. This program also helps adults with successful transition to employment, postsecondary, apprenticeship, secondary school, and increased independence.

The Adult Learning Centre also offers access to photocopying, printers, and computers for purposes of independence and employment.

FAMILY WELLBEING PROGRAM



519-534-4445

Provides prevention-focused supports to reduce violence, reduce Indigenous youth going into Child Welfare Services, and improve the wellbeing of the community. Offers a variety of services such as:

- **navigation/outreach:** short term direct support to individuals/families, focussed on finding and accessing appropriate supports/services to support a family centred system of care;
- **referrals:** on- and off-reserve services;
- **information sharing:** new and current services and resources;
- **community relationship building:** volunteer opportunities; feasts; gatherings; special outings and activities;
- **partnership programming:** supports a family centred system of care by bringing the best possible opportunities to families (i.e. parenting skills; family activities; skill building workshops, etc.);
- **land-based and cultural learning:** gardening and preserving skills; medicine gathering; traditional harvesting skills and demonstrations; traditional crafting skills; outdoor cooking, etc.; and
- **coordination of community awareness and prevention campaigns:** violence prevention; safe communities (i.e., Missing/Murdered Indigenous Women/Girls, Indian Residential Schools, Addictions Awareness, Human Trafficking awareness/prevention, etc.).

Check for upcoming events on our Facebook page.

LEGEND



SERVICE / PROGRAM
PROVISION



LAND-BASED
PROGRAMMING



PHYSICAL / CLINICAL
HEALTH



MENTAL HEALTH
AND WELLBEING



CULTURAL WELLBEING



EDUCATION



FINANCIAL SERVICES /
SUPPORT



ENVIRONMENTAL
WELLBEING



SUPPORT FOR
CAREGIVERS



PREVENTATIVE CARE /
PROGRAMMING

EMPLOYMENT
& TRAINING

NAWASH SOCIAL SERVICES



33 Maadookii Cres., Suite 105

Neyaashiinigmiing, ON N0H 2T0

T: 519-534-3753 | F: 519-534-1501 | E: clientsupport@nawashfn.ca

Administers the following programs, services, and supports:

- *Ontario Works program, which offers social assistance to those in financial need, and other employment services;*
- *Addiction Services Initiative, which offers life stabilization and employment supports to individuals on Social Assistance struggling with addiction;*
- *support for individuals seeking Ontario Disability Support Program (ODSP);*
- *services for budgeting and job training;*
- *transitional support funding for low-income, on-reserve households with housing disconnections and minor repairs; and*
- *financial support for funerals and burials.*

LEGEND



SERVICE / PROGRAM
PROVISION



LAND-BASED
PROGRAMMING



PHYSICAL / CLINICAL
HEALTH



MENTAL HEALTH
AND WELLBEING



CULTURAL WELLBEING



EDUCATION



FINANCIAL SERVICES /
SUPPORT



ENVIRONMENTAL
WELLBEING



SUPPORT FOR
CAREGIVERS



PREVENTATIVE CARE /
PROGRAMMING

SENIORS &
ELDERS

M'WIKWEDONG INDIGENOUS FRIENDSHIP CENTRE



**1045 3rd Ave. West
Owen Sound, ON N4K 5W6
519-371-1147**

M'Wikwedong has several programs that cover a variety of ages, including prenatal care, infants, children, pre-teens, and elders.

MAADOOKII SENIOR'S GROUP



**125 Maadookii Cres.
Neyaashiinigmiing, ON N0H 2T0
519-534-4918**

The Maadookii Centre offers services and activities for seniors, including:

- *home visits;*
- *snow removal and light repairs*
- *Native crafts;*
- *games (cards, bingo, scrabble) & entertainment;*
- *socials and other gatherings;*
- *day trips (the Centre has its own wheel-chair accessible bus);*
- *Ojibway language classes;*
- *support to travel to language conferences; and*
- *interaction with other people and programs on reserve.*

LEGEND



SERVICE / PROGRAM
PROVISION



LAND-BASED
PROGRAMMING



PHYSICAL / CLINICAL
HEALTH



MENTAL HEALTH
AND WELLBEING



CULTURAL WELLBEING



EDUCATION



FINANCIAL SERVICES /
SUPPORT



ENVIRONMENTAL
WELLBEING



SUPPORT FOR
CAREGIVERS



PREVENTATIVE CARE /
PROGRAMMING

SENIORS &
ELDERS

HOME AND COMMUNITY CARE

247 Prairie Rd.
Neyaashiinigmiing, ON N0H 2T0
519-534-0373

Provides programs and care to seniors with health issues and disabilities.
Supports and programs include:

- *Personal Support Workers (PSW);*
- *homecare workers;*
- *Community Support Services (CSS): planning group meals/dining, shopping trips, social events, exercises (including swimming);*
- *Seniors Assistance Program;*
- *transportation; and*
- *interaction with other people and programs on reserve.*

NAWASH SOCIAL SERVICES

33 Maadookii Cres., Suite 105
Neyaashiinigmiing, ON N0H 2T0
T: 519-534-3753 | F: 519-534-1501 | E: clientsupport@nawashfn.ca

Administers the following programs, services, and supports:

- *Ontario Works program, which offers social assistance to those in financial need, and other employment services;*
- *Addiction Services Initiative, which offers life stabilization and employment supports to individuals on Social Assistance struggling with addiction;*
- *support for individuals seeking Ontario Disability Support Program (ODSP);*
- *services for budgeting and job training;*
- *transitional support funding for low-income, on-reserve households with housing disconnections and minor repairs; and*
- *financial support for funerals and burials.*

LEGEND



SERVICE / PROGRAM
PROVISION



LAND-BASED
PROGRAMMING



PHYSICAL / CLINICAL
HEALTH



MENTAL HEALTH
AND WELLBEING



CULTURAL WELLBEING



EDUCATION



FINANCIAL SERVICES /
SUPPORT



ENVIRONMENTAL
WELLBEING



SUPPORT FOR
CAREGIVERS



PREVENTATIVE CARE /
PROGRAMMING

SENIORS &
ELDERS

SOUTHWEST ONTARIO ABORIGINAL HEALTH ACCESS CENTRE (SOAHAC)



**733 9th Avenue East, Unit 3
Owen Sound, ON N4K 3E6
519-376-5508**

Supports and programs include:

- *adult mental health and addictions services;*
- *child and youth mental health and addictions services;*
- *clinical services;*
- *Supporting Aboriginal Seniors at Home (SASH);*
- *tele-mental health for children and youth; and*
- *traditional healing.*

CHILDREN & YOUTH

LEGEND



SERVICE / PROGRAM
PROVISION



LAND-BASED
PROGRAMMING



PHYSICAL / CLINICAL
HEALTH



MENTAL HEALTH
AND WELLBEING



CULTURAL WELLBEING



EDUCATION



FINANCIAL SERVICES /
SUPPORT



ENVIRONMENTAL
WELLBEING



SUPPORT FOR
CAREGIVERS



PREVENTATIVE CARE /
PROGRAMMING

NSHIIME CHILD & FAMILY CENTRE



255 Prairie Rd.

Neyaashiinigmiing, ON N0H 2T0

519-534-3909

Provides daycare and other programming such as:

- *Journey Together: programming helping families of children 0-6;*
- *organizing community events;*
- *supporting early childhood educators and others who work with children ages 0-6;*
- *hosting a parenting group;*
- *partnering with a youth group that meets regularly; and*
- *child assessments.*

FAMILY WELLBEING PROGRAM



519-534-4445

Provides prevention-focused supports to reduce violence, reduce Indigenous youth going into Child Welfare Services, and improve the wellbeing of the community. Offers a variety of services such as:

- **navigation/outreach:** short term direct support to individuals/families, focussed on finding and accessing appropriate supports/services to support a family centred system of care;
- **referrals:** on- and off-reserve services;
- **information sharing:** new and current services and resources;
- **community relationship building:** volunteer opportunities; feasts; gatherings; special outings and activities;
- **partnership programming:** supports a family centred system of care by bringing the best possible opportunities to families (i.e., parenting skills; family activities; skill building workshops, etc.);
- **land-based and cultural learning:** gardening and preserving skills; medicine gathering; traditional harvesting skills and demonstrations; traditional crafting skills; outdoor cooking, etc.; and
- **coordination of community awareness and prevention campaigns:** violence prevention; safe communities (i.e., Missing/Murdered Indigenous Women/Girls, Indian Residential Schools, Addictions Awareness, Human Trafficking awareness/prevention, etc.).

Check for upcoming events on our Facebook page.

CHILDREN & YOUTH

LEGEND



SERVICE / PROGRAM
PROVISION



LAND-BASED
PROGRAMMING



PHYSICAL / CLINICAL
HEALTH



MENTAL HEALTH
AND WELLBEING



CULTURAL WELLBEING



EDUCATION



FINANCIAL SERVICES /
SUPPORT



ENVIRONMENTAL
WELLBEING



SUPPORT FOR
CAREGIVERS



PREVENTATIVE CARE /
PROGRAMMING

HEALTH CENTRE



247 Prairie Rd.

Neyaashiinigmiing, ON N0H 2T0

519-534-0373

Provides programs and support to pregnant people and parents of children up to 6 years of age, such as:

- *preparing for Parenting and Caregiving program, including one-on-one support and home visits;*
- *prenatal nutrition;*
- *prenatal and postpartum support;*
- *assistance to natural and professional support systems; and*
- *education and promotion of traditional childrearing and cultural practices.*

Provides early identification and intervention services for vulnerable children and youth, as well as youth experiencing familial, emotional, behavioural, or cultural issues. Services include:

- *counselling;*
- *skill development;*
- *support services;*
- *strengthening relationships and connections with family and community; and*
- *promotion of healthy lifestyle choices.*

Provides programs and assists in navigation of programs for addictions services or mental health crisis services, such as:

- *Nawash Alcoholics Anonymous support groups;*
- *naloxone kits and training;*
- *Rapid Access Addiction Medicine (RAAM) Clinic, which provides fast access to alcohol and substance use counselling and withdrawal management medications; and*
- *Harm Reduction Worker to help navigate available services.*

Other services include:

- *monthly physician's clinic;*
- *foot care services;*
- *medical transportation;*
- *chronic disease prevention program for diabetes, heart disease, and cancer;*
- *communicable disease program to help control the spread of vaccine-preventable diseases;*
- *environmental awareness program, involving water sampling and testing for West Nile Virus;*
- *emergency response team; and*
- *workshops and activities aimed at promoting healthy living and wellbeing.*

CHILDREN & YOUTH

LEGEND



SERVICE / PROGRAM
PROVISION



LAND-BASED
PROGRAMMING



PHYSICAL / CLINICAL
HEALTH



MENTAL HEALTH
AND WELLBEING



CULTURAL WELLBEING



EDUCATION



FINANCIAL SERVICES /
SUPPORT



ENVIRONMENTAL
WELLBEING



SUPPORT FOR
CAREGIVERS



PREVENTATIVE CARE /
PROGRAMMING

● KIKENDAASOGAMIG ELEMENTARY SCHOOL



45 Farm Rd.

Neyaashiinigmiing, ON N0H 2T0

519-534-0719

Provides the following services and supports from Junior Kindergarten - Grade 8:

- Ojibway language instruction;
- support for incorporating cultural education;
- wide range of special education support;
- “Daily Breakfast” and “Hot Lunch” programs for the winter months;
- land-based learning; and
- locally-developed social studies curriculum.

● M’WIKWEDONG INDIGENOUS FRIENDSHIP CENTRE



1045 3rd Ave. West

Owen Sound, ON N4K 5W6

519-371-1147

M’Wikwedong has several programs that cover a variety of ages, including prenatal care, infants, children, pre-teens, and elders.

● NATIVE CHILD WELFARE



23 Lighthouse Rd.

Neyaashiinigmiing, ON N0H 2T0

519-534-3818

Community-based early intervention, and prevention services, including: placements for children in need; land-based programming for spiritual, mental, physical, and emotional wellbeing; and support programs for children, youth and their caregivers.

Offers a variety of youth programming such as:

- teen drop-in nights;
- education on culture, spirituality, physical health, and mental health;
- parent support circle;
- support to substitute parents; and
- support to foster parents.

CHILDREN & YOUTH

LEGEND



SERVICE / PROGRAM
PROVISION



LAND-BASED
PROGRAMMING



PHYSICAL / CLINICAL
HEALTH



MENTAL HEALTH
AND WELLBEING



CULTURAL WELLBEING



EDUCATION



FINANCIAL SERVICES /
SUPPORT



ENVIRONMENTAL
WELLBEING



SUPPORT FOR
CAREGIVERS



PREVENTATIVE CARE /
PROGRAMMING

SOUTHWEST ONTARIO ABORIGINAL HEALTH ACCESS CENTRE (SOAHAC)



**733 9th Avenue East, Unit 3
Owen Sound, ON N4K 3E6
519-376-5508**

Supports and programs include:

- adult mental health and addictions services;
- child and youth mental health and addictions services;
- clinical services;
- Supporting Aboriginal Seniors at Home (SASH);
- tele-mental health for children and youth; and
- traditional healing.

WELLNESS CENTRE



**Temporary Location:
Health Centre, 247 Prairie Rd.
Neyaashiinigmiing, ON N0H 2T0
519-534-3764**

**Permanent Location:
376 Sydney Bay Rd.
Neyaashiinigmiing, ON N0H 2T0
519-534-0373**

Offers preventative programs and crisis intervention through:

- individual and group sessions;
- mental health and addictions supports and referrals;
- mental health and addiction education;
- access to outside supports such as residential treatment, detox, and hospital supports;
- cultural mentoring and supports;
- traditional medicine supplies and supports;
- school visits and counselling supports for children and youth;
- social events; and
- traditional crafting sessions.

LEGEND



SERVICE / PROGRAM
PROVISION



LAND-BASED
PROGRAMMING



PHYSICAL / CLINICAL
HEALTH



MENTAL HEALTH
AND WELLBEING



CULTURAL WELLBEING



EDUCATION



FINANCIAL SERVICES /
SUPPORT



ENVIRONMENTAL
WELLBEING



SUPPORT FOR
CAREGIVERS



PREVENTATIVE CARE /
PROGRAMMING

ADMINISTRATION

ADMINISTRATION



**135 Lakeshore Blvd.
Neyaashiinigmiing, ON N0H 2T0
519-534-1689**

Services provided within the Administration office include: Payroll, Accounts payable/receivable, Lands Management, Estates and Membership, Band Representatives, and Reception.

The Chief's Office, the Tribal Secretary and the Band Administrator are also housed in this building.

MEMBERSHIP DEPARTMENT



**135 Lakeshore Blvd.
Neyaashiinigmiing, ON N0H 2T0
519-534-1689**

Assists Band members with:

- *clan management;*
- *estate management;*
- *family deaths;*
- *birth and marriage registrations;*
- *identifying right to registration;*
- *tracing family; and*
- *people living with disabilities*

NEYAASHIINIGMIING POLICE



**202 Port Elgin Rd.
Neyaashiinigmiing, ON N0H 2T0
519-534-1233**

Provides services and involvement in:

- *law enforcement;*
- *crime prevention; and*
- *community service.*

LEGEND



SERVICE / PROGRAM
PROVISION



LAND-BASED
PROGRAMMING



PHYSICAL / CLINICAL
HEALTH



MENTAL HEALTH
AND WELLBEING



CULTURAL WELLBEING



EDUCATION



FINANCIAL SERVICES /
SUPPORT



ENVIRONMENTAL
WELLBEING



SUPPORT FOR
CAREGIVERS



PREVENTATIVE CARE /
PROGRAMMING

ADMINISTRATION

CHIPPEWAS OF NAWASH CHIEF AND COUNCIL

**135 Lakeshore Blvd.
Neyaashiinigmiing, ON N0H 2T0
519-534-1689**

Responsible for governance duties and works to fill in gaps and provide supports in areas that are not covered other places, such as:

- *organizing internet access for programs; and*
- *assisting with mental health issues, deaths, and emergencies.*

LANDS / MEMBERSHIP

**135 Lakeshore Blvd.
Neyaashiinigmiing, ON N0H 2T0
519-534-1077**

The Chippewas of Nawash Lands Department manages and monitors land use for Band lands located at Neyaashiinigmiing Reserve #27, Hunting Grounds 60B, Fishing Islands and other properties held and/or acquired by the Chippewas of Nawash Unceded First Nation. The Lands Department also assists Band members with boundary location and deals with wills and estates.

INFRASTRUCTURE

LEGEND



SERVICE / PROGRAM
PROVISION



LAND-BASED
PROGRAMMING



PHYSICAL / CLINICAL
HEALTH



MENTAL HEALTH
AND WELLBEING



CULTURAL WELLBEING



EDUCATION



FINANCIAL SERVICES /
SUPPORT



ENVIRONMENTAL
WELLBEING



SUPPORT FOR
CAREGIVERS



PREVENTATIVE CARE /
PROGRAMMING

ENVIRONMENTAL OFFICE

25 Maadookii Subdivision
Neyaashiinigmiing, ON N0H 2T0
519-534-5507

Provides the infrastructure and expertise for environmental matters that affect the interests of the Saugeen Ojibway Nations.

FISHERIES ASSESSMENT PROGRAM

50 Farm Rd.
Neyaashiinigmiing, ON N0H 2T0
519-379-0920

The main purpose of this program is to provide information to Chief and Council so they can make informed decisions about the fishery. Information is collected through various methods, including meetings with commercial fishermen.

This program is involved in addressing fish stocking, invasive species, and fisheries economic development and employment.

PUBLIC WORKS

24 Community Centre Rd.
Neyaashiinigmiing, ON N0H 2T0
519-534-1036

Provides services related to:

- roads;
- water (including feasibility studies); and
- buildings (including ensuring they are to code).

INFRASTRUCTURE

LEGEND



SERVICE / PROGRAM
PROVISION



LAND-BASED
PROGRAMMING



PHYSICAL / CLINICAL
HEALTH



MENTAL HEALTH
AND WELLBEING



CULTURAL WELLBEING



EDUCATION



FINANCIAL SERVICES /
SUPPORT



ENVIRONMENTAL
WELLBEING



SUPPORT FOR
CAREGIVERS



PREVENTATIVE CARE /
PROGRAMMING

WATER TREATMENT AND DISTRIBUTION



**85 Community Center Rd.
Neyaashiinigmiing, ON N0H 2T0
519-534-4599**

Provide supports including:

- *water treatment;*
- *fixing pipes;*
- *assistance with water tests;*
- *help with new water plant;*
- *contributions to community events (e.g. bringing water); and*
- *building a water treatment training centre for First Nations.*

MENTAL HEALTH & ADDICTIONS

LEGEND



SERVICE / PROGRAM
PROVISION



LAND-BASED
PROGRAMMING



PHYSICAL / CLINICAL
HEALTH



MENTAL HEALTH
AND WELLBEING



CULTURAL WELLBEING



EDUCATION



FINANCIAL SERVICES /
SUPPORT



ENVIRONMENTAL
WELLBEING



SUPPORT FOR
CAREGIVERS



PREVENTATIVE CARE /
PROGRAMMING

COMMUNITY HEALTH

247 Prairie Rd.
Neyaashiinigmiing, ON N0H 2T0
519-534-0373

Provides education, assessments, and treatment for:

- chronic diseases;
- healthy eating, physical activity, fitness, hygiene, and daily health needs;
- sexual health, HIV/AIDS education and prevention;
- community water sampling;
- virus tracking and vaccinations for communicable diseases;
- injuries; and
- pandemic planning.

Includes programs such as:

- health education;
- mask-making for community members;
- maternal health;
- Naloxone training; and
- services for seniors.

CHIPPEWAS OF NAWASH CHIEF AND COUNCIL

135 Lakeshore Blvd.
Neyaashiinigmiing, ON N0H 2T0
519-534-1689

Responsible for governance duties and works to fill in gaps and provide supports in areas that are not covered other places, such as:

- organizing internet access for programs; and
- assisting with mental health issues, deaths, and emergencies.

MENTAL HEALTH & ADDICTIONS

LEGEND



SERVICE / PROGRAM
PROVISION



LAND-BASED
PROGRAMMING



PHYSICAL / CLINICAL
HEALTH



MENTAL HEALTH
AND WELLBEING



CULTURAL WELLBEING



EDUCATION



FINANCIAL SERVICES /
SUPPORT



ENVIRONMENTAL
WELLBEING



SUPPORT FOR
CAREGIVERS



PREVENTATIVE CARE /
PROGRAMMING

DEPARTMENT OF EDUCATION



6 Harbour Road

Neyaashiinigmiing, ON N0H 2T0

519-534-0882

Provides a range of supports and services, including:

- *options for post-secondary education information;*
- *education diversity assistance program;*
- *interest and concerns related to education;*
- *mental health services;*
- *goal planning for student success;*
- *supports for post-secondary students; and*
- *supports and counselling for secondary students.*

NATIVE CHILD WELFARE



23 Lighthouse Rd.

Neyaashiinigmiing, ON N0H 2T0

519-534-3818

Community-based early intervention, and prevention services, including: placements for children in need; land-based programming for spiritual, mental, physical, and emotional wellbeing; and support programs for children, youth and their caregivers.

Offers a variety of youth programming such as:

- *teen drop-in nights;*
- *education on culture, spirituality, physical health, and mental health;*
- *parent support circle;*
- *support to substitute parents; and*
- *support to foster parents.*

MENTAL HEALTH & ADDICTIONS

LEGEND



SERVICE / PROGRAM
PROVISION



LAND-BASED
PROGRAMMING



PHYSICAL / CLINICAL
HEALTH



MENTAL HEALTH
AND WELLBEING



CULTURAL WELLBEING



EDUCATION



FINANCIAL SERVICES /
SUPPORT



ENVIRONMENTAL
WELLBEING



SUPPORT FOR
CAREGIVERS



PREVENTATIVE CARE /
PROGRAMMING

HEALTH CENTRE



247 Prairie Rd.

Neyaashiinigmiing, ON N0H 2T0

519-534-0373

Provides programs and support to pregnant people and parents of children up to 6 years of age, such as:

- *preparing for Parenting and Caregiving program, including one-on-one support and home visits;*
- *prenatal nutrition;*
- *prenatal and postpartum support;*
- *assistance to natural and professional support systems; and*
- *education and promotion of traditional childrearing and cultural practices.*

Provides early identification and intervention services for vulnerable children and youth, as well as youth experiencing familial, emotional, behavioural, or cultural issues. Services include:

- *counselling;*
- *skill development;*
- *support services;*
- *strengthening relationships and connections with family and community; and*
- *promotion of healthy lifestyle choices.*

Provides programs and assists in navigation of programs for addictions services or mental health crisis services, such as:

- *Nawash Alcoholics Anonymous support groups;*
- *naloxone kits and training;*
- *Rapid Access Addiction Medicine (RAAM) Clinic, which provides fast access to alcohol and substance use counselling and withdrawal management medications; and*
- *Harm Reduction Worker to help navigate available services.*

Other services include:

- *monthly physician's clinic;*
- *foot care services;*
- *medical transportation;*
- *chronic disease prevention program for diabetes, heart disease, and cancer;*
- *communicable disease program to help control the spread of vaccine-preventable diseases;*
- *environmental awareness program, involving water sampling and testing for West Nile Virus;*
- *emergency response team; and*
- *workshops and activities aimed at promoting healthy living and wellbeing.*

MENTAL HEALTH & ADDICTIONS

LEGEND



SERVICE / PROGRAM
PROVISION



LAND-BASED
PROGRAMMING



PHYSICAL / CLINICAL
HEALTH



MENTAL HEALTH
AND WELLBEING



CULTURAL WELLBEING



EDUCATION



FINANCIAL SERVICES /
SUPPORT



ENVIRONMENTAL
WELLBEING



SUPPORT FOR
CAREGIVERS



PREVENTATIVE CARE /
PROGRAMMING

NAWASH SOCIAL SERVICES



33 Maadookii Cres., Suite 105

Neyaashiinigmiing, ON N0H 2T0

T: 519-534-3753 | F: 519-534-1501 | E: clientsupport@nawashfn.ca

Administers the following programs, services, and supports:

- *Ontario Works program, which offers social assistance to those in financial need, and other employment services;*
- *Addiction Services Initiative, which offers life stabilization and employment supports to individuals on Social Assistance struggling with addiction;*
- *support for individuals seeking Ontario Disability Support Program (ODSP);*
- *services for budgeting and job training;*
- *transitional support funding for low-income, on-reserve households with housing disconnections and minor repairs; and*
- *financial support for funerals and burials.*

SOUTHWEST ONTARIO ABORIGINAL HEALTH ACCESS CENTRE (SOAHAC)



733 9th Avenue East, Unit 3

Owen Sound, ON N4K 3E6

519-376-5508

Supports and programs include:

- *adult mental health and addictions services;*
- *child and youth mental health and addictions services;*
- *clinical services;*
- *Supporting Aboriginal Seniors at Home (SASH);*
- *tele-mental health for children and youth; and*
- *traditional healing.*

MENTAL HEALTH & ADDICTIONS

LEGEND



SERVICE / PROGRAM
PROVISION



LAND-BASED
PROGRAMMING



PHYSICAL / CLINICAL
HEALTH



MENTAL HEALTH
AND WELLBEING



CULTURAL WELLBEING



EDUCATION



FINANCIAL SERVICES /
SUPPORT



ENVIRONMENTAL
WELLBEING



SUPPORT FOR
CAREGIVERS



PREVENTATIVE CARE /
PROGRAMMING

WELLNESS CENTRE



Temporary Location:
Health Centre, 247 Prairie Rd.
Neyaashiinigmiing, ON N0H 2T0
519-534-3764

Permanent Location:
376 Sydney Bay Rd.
Neyaashiinigmiing, ON N0H 2T0
519-534-0373

Offers preventative programs and crisis intervention through:

- individual and group sessions;
- mental health and addictions supports and referrals;
- mental health and addiction education;
- access to outside supports such as residential treatment, detox, and hospital supports;
- cultural mentoring and supports;
- traditional medicine supplies and supports;
- school visits and counselling supports for children and youth;
- social events; and
- traditional crafting sessions.

PHYSICAL HEALTH

LEGEND



SERVICE / PROGRAM
PROVISION



LAND-BASED
PROGRAMMING



PHYSICAL / CLINICAL
HEALTH



MENTAL HEALTH
AND WELLBEING



CULTURAL WELLBEING



EDUCATION



FINANCIAL SERVICES /
SUPPORT



ENVIRONMENTAL
WELLBEING



SUPPORT FOR
CAREGIVERS



PREVENTATIVE CARE /
PROGRAMMING

COMMUNITY HEALTH

247 Prairie Rd.
Neyaashiinigmiing, ON N0H 2T0
519-534-0373

Provides education, assessments, and treatment for:

- chronic diseases;
- healthy eating, physical activity, fitness, hygiene, and daily health needs;
- sexual health, HIV/AIDS education and prevention;
- community water sampling;
- virus tracking and vaccinations for communicable diseases;
- injuries; and
- pandemic planning.

Includes programs such as:

- health education;
- mask-making for community members;
- maternal health;
- Naloxone training; and
- services for seniors.

HOME AND COMMUNITY CARE

247 Prairie Rd.
Neyaashiinigmiing, ON N0H 2T0
519-534-0373

Provides programs and care to seniors with health issues and disabilities.
Supports and programs include:

- Personal Support Workers (PSW);
- homecare workers;
- Community Support Services (CSS): planning group meals/dining, shopping trips, social events, exercises (including swimming);
- Seniors Assistance Program;
- transportation; and
- interaction with other people and programs on reserve.

PHYSICAL HEALTH

LEGEND



SERVICE / PROGRAM
PROVISION



LAND-BASED
PROGRAMMING



PHYSICAL / CLINICAL
HEALTH



MENTAL HEALTH
AND WELLBEING



CULTURAL WELLBEING



EDUCATION



FINANCIAL SERVICES /
SUPPORT



ENVIRONMENTAL
WELLBEING



SUPPORT FOR
CAREGIVERS



PREVENTATIVE CARE /
PROGRAMMING

HEALTH CENTRE



247 Prairie Rd.

Neyaashiinigmiing, ON N0H 2T0

519-534-0373

Provides programs and support to pregnant people and parents of children up to 6 years of age, such as:

- *preparing for Parenting and Caregiving program, including one-on-one support and home visits;*
- *prenatal nutrition;*
- *prenatal and postpartum support;*
- *assistance to natural and professional support systems; and*
- *education and promotion of traditional childrearing and cultural practices.*

Provides early identification and intervention services for vulnerable children and youth, as well as youth experiencing familial, emotional, behavioural, or cultural issues. Services include:

- *counselling;*
- *skill development;*
- *support services;*
- *strengthening relationships and connections with family and community; and*
- *promotion of healthy lifestyle choices.*

Provides programs and assists in navigation of programs for addictions services or mental health crisis services, such as:

- *Nawash Alcoholics Anonymous support groups;*
- *naloxone kits and training;*
- *Rapid Access Addiction Medicine (RAAM) Clinic, which provides fast access to alcohol and substance use counselling and withdrawal management medications; and*
- *Harm Reduction Worker to help navigate available services.*

Other services include:

- *monthly physician's clinic;*
- *foot care services;*
- *medical transportation;*
- *chronic disease prevention program for diabetes, heart disease, and cancer;*
- *communicable disease program to help control the spread of vaccine-preventable diseases;*
- *environmental awareness program, involving water sampling and testing for West Nile Virus;*
- *emergency response team; and*
- *workshops and activities aimed at promoting healthy living and wellbeing.*

LEGEND



SERVICE / PROGRAM
PROVISION



LAND-BASED
PROGRAMMING



PHYSICAL / CLINICAL
HEALTH



MENTAL HEALTH
AND WELLBEING



CULTURAL WELLBEING



EDUCATION



FINANCIAL SERVICES /
SUPPORT



ENVIRONMENTAL
WELLBEING



SUPPORT FOR
CAREGIVERS



PREVENTATIVE CARE /
PROGRAMMING

PHYSICAL HEALTH

NAWASH SOCIAL SERVICES

33 Maadookii Cres., Suite 105

Neyaashiinigmiing, ON N0H 2T0

T: 519-534-3753 | F: 519-534-1501 | E: clientsupport@nawashfn.ca

Administers the following programs, services, and supports:

- *Ontario Works program, which offers social assistance to those in financial need, and other employment services;*
- *Addiction Services Initiative, which offers life stabilization and employment supports to individuals on Social Assistance struggling with addiction;*
- *support for individuals seeking Ontario Disability Support Program (ODSP);*
- *services for budgeting and job training;*
- *transitional support funding for low-income, on-reserve households with housing disconnections and minor repairs; and*
- *financial support for funerals and burials.*

RECREATION

519-379-0920

Increases participation opportunities by supporting communities to provide sport, recreation and physical activity programs suitable to the needs and interests of all.

Increases community capacity by providing skill development and leadership development opportunities to members of the community.

SOUTHWEST ONTARIO ABORIGINAL HEALTH ACCESS CENTRE (SOAHAC)

733 9th Avenue East, Unit 3

Owen Sound, ON N4K 3E6

519-376-5508

Supports and programs include:

- *adult mental health and addictions services;*
- *child and youth mental health and addictions services;*
- *clinical services;*
- *Supporting Aboriginal Seniors at Home (SASH);*
- *tele-mental health for children and youth; and*
- *traditional healing.*

COMPLETE LISTING OF PROGRAMS AND SERVICES



COMPLETE LISTING OF PROGRAMS AND SERVICES

LEGEND



SERVICE / PROGRAM
PROVISION



LAND-BASED
PROGRAMMING



PHYSICAL / CLINICAL
HEALTH



MENTAL HEALTH
AND WELLBEING



CULTURAL WELLBEING



EDUCATION



FINANCIAL SERVICES /
SUPPORT



ENVIRONMENTAL
WELLBEING



SUPPORT FOR
CAREGIVERS



PREVENTATIVE CARE /
PROGRAMMING

ADMINISTRATION



**135 Lakeshore Blvd.
Neyaashiinigmiing, ON N0H 2T0
519-534-1689**

Services provided within the Administration office include: Payroll, Accounts payable/receivable, Lands Management, Estates and Membership, Band Representatives, and Reception.

The Chief's Office, the Tribal Secretary and the Band Administrator are also housed in this building.



ADULT LEARNING CENTRE



**33 Maadookii Crescent, Suite 105
Neyaashiinigmiing, ON N0H 2T0
T: 519-534-5092 | C: 519-477-4667 | E: literacy@gbtel.ca**

Administers the Ontario Literacy and Basic Skills Program, which helps adults in Ontario to develop and apply communication, numeracy, interpersonal and digital skills to achieve their goals. This program also helps adults with successful transition to employment, postsecondary, apprenticeship, secondary school, and increased independence.

The Adult Learning Centre also offers access to photocopying, printers, and computers for purposes of independence and employment.



CHIPPEWAS OF NAWASH CHIEF AND COUNCIL



**135 Lakeshore Blvd.
Neyaashiinigmiing, ON N0H 2T0
519-534-1689**

Responsible for governance duties and works to fill in gaps and provide supports in areas that are not covered other places, such as:

- organizing internet access for programs; and
- assisting with mental health issues, deaths, and emergencies.



COMPLETE LISTING OF PROGRAMS AND SERVICES

LEGEND



SERVICE / PROGRAM
PROVISION



LAND-BASED
PROGRAMMING



PHYSICAL / CLINICAL
HEALTH



MENTAL HEALTH
AND WELLBEING



CULTURAL WELLBEING



EDUCATION



FINANCIAL SERVICES /
SUPPORT



ENVIRONMENTAL
WELLBEING



SUPPORT FOR
CAREGIVERS



PREVENTATIVE CARE /
PROGRAMMING

COMMUNITY HEALTH

247 Prairie Rd.
Neyaashiinigmiing, ON N0H 2T0
519-534-0373

Provides education, assessments, and treatment for:

- *chronic diseases;*
- *healthy eating, physical activity, fitness, hygiene, and daily health needs;*
- *sexual health, HIV/AIDS education and prevention;*
- *community water sampling;*
- *virus tracking and vaccinations for communicable diseases;*
- *injuries; and*
- *pandemic planning.*

Includes programs such as:

- *health education;*
- *mask-making for community members;*
- *maternal health;*
- *Naloxone training; and*
- *services for seniors.*



DEPARTMENT OF EDUCATION

6 Harbour Road
Neyaashiinigmiing, ON N0H 2T0
519-534-0882

Provides a range of supports and services, including:

- *options for post-secondary education information;*
- *education diversity assistance program;*
- *interest and concerns related to education;*
- *mental health services;*
- *goal planning for student success;*
- *supports for post-secondary students; and*
- *supports and counselling for secondary students.*



COMPLETE LISTING OF PROGRAMS AND SERVICES

LEGEND



SERVICE / PROGRAM
PROVISION



LAND-BASED
PROGRAMMING



PHYSICAL / CLINICAL
HEALTH



MENTAL HEALTH
AND WELLBEING



CULTURAL WELLBEING



EDUCATION



FINANCIAL SERVICES /
SUPPORT



ENVIRONMENTAL
WELLBEING



SUPPORT FOR
CAREGIVERS



PREVENTATIVE CARE /
PROGRAMMING

ENVIRONMENTAL OFFICE

25 Maadookii Subdivision
Neyaashiinigmiing, ON N0H 2T0
519-534-5507

Provides the infrastructure and expertise for environmental matters that affect the interests of the Saugeen Ojibway Nations.



FAMILY WELLBEING PROGRAM



519-534-4445

Provides prevention-focused supports to reduce violence, reduce Indigenous youth going into Child Welfare Services, and improve the wellbeing of the community. Offers a variety of services such as:

- **navigation/outreach:** short term direct support to individuals/families, focussed on finding and accessing appropriate supports/services to support a family centred system of care;
- **referrals:** on- and off-reserve services;
- **information sharing:** new and current services and resources;
- **community relationship building:** volunteer opportunities; feasts; gatherings; special outings and activities;
- **partnership programming:** supports a family centred system of care by bringing the best possible opportunities to families (i.e, parenting skills; family activities; skill building workshops, etc.);
- **land-based and cultural learning:** gardening and preserving skills; medicine gathering; traditional harvesting skills and demonstrations; traditional crafting skills; outdoor cooking, etc.; and
- **coordination of community awareness and prevention campaigns:** violence prevention; safe communities (i.e., Missing/Murdered Indigenous Women/Girls, Indian Residential Schools, Addictions Awareness, Human Trafficking awareness/prevention, etc.).

Check for upcoming events on our Facebook page.



COMPLETE LISTING OF PROGRAMS AND SERVICES

LEGEND



SERVICE / PROGRAM
PROVISION



LAND-BASED
PROGRAMMING



PHYSICAL / CLINICAL
HEALTH



MENTAL HEALTH
AND WELLBEING



CULTURAL WELLBEING



EDUCATION



FINANCIAL SERVICES /
SUPPORT



ENVIRONMENTAL
WELLBEING



SUPPORT FOR
CAREGIVERS



PREVENTATIVE CARE /
PROGRAMMING

FISHERIES ASSESSMENT PROGRAM



50 Farm Rd.

Neyaashiinigmiing, ON N0H 2T0

519-379-0920

The main purpose of this program is to provide information to Chief and Council so they can make informed decisions about the fishery. Information is collected through various methods, including meetings with commercial fishermen.

This program is involved in addressing fish stocking, invasive species, and fisheries economic development and employment.



FOOD BANK

Seniors Centre: 519-534-4918

Nshiime Child & Family Centre: 519- 534-3909

The Food Bank provides food/staples/basics to families and persons of the Chippewas of Nawash community. The volunteer team fills requests for emergency foods based on family size also. This program is a member of the Ontario Food Bank Association and organizes the Christmas Food Hamper drive for families in the greater needs holiday season. The Food Bank provides community lunches/meals as well as clothing, bedding, furniture, and emergency needs.



HOME AND COMMUNITY CARE



247 Prairie Rd.

Neyaashiinigmiing, ON N0H 2T0

519-534-0373

Provides programs and care to seniors with health issues and disabilities. Supports and programs include:

- *Personal Support Workers (PSW);*
- *homecare workers;*
- *Community Support Services (CSS): planning group meals/dining, shopping trips, social events, exercises (including swimming);*
- *Seniors Assistance Program;*
- *transportation; and*
- *interaction with other people and programs on reserve.*



COMPLETE LISTING OF PROGRAMS AND SERVICES

LEGEND



SERVICE / PROGRAM
PROVISION



LAND-BASED
PROGRAMMING



PHYSICAL / CLINICAL
HEALTH



MENTAL HEALTH
AND WELLBEING



CULTURAL WELLBEING



EDUCATION



FINANCIAL SERVICES /
SUPPORT



ENVIRONMENTAL
WELLBEING



SUPPORT FOR
CAREGIVERS



PREVENTATIVE CARE /
PROGRAMMING

HEALTH CENTRE



247 Prairie Rd.

Neyaashiinigmiing, ON N0H 2T0

519-534-0373

Provides programs and support to pregnant people and parents of children up to 6 years of age, such as:

- *preparing for Parenting and Caregiving program, including one-on-one support and home visits;*
- *prenatal nutrition;*
- *prenatal and postpartum support;*
- *assistance to natural and professional support systems; and*
- *education and promotion of traditional childrearing and cultural practices.*

Provides early identification and intervention services for vulnerable children and youth, as well as youth experiencing familial, emotional, behavioural, or cultural issues. Services include:

- *counselling;*
- *skill development;*
- *support services;*
- *strengthening relationships and connections with family and community; and*
- *promotion of healthy lifestyle choices.*

Provides programs and assists in navigation of programs for addictions services or mental health crisis services, such as:

- *Nawash Alcoholics Anonymous support groups;*
- *naloxone kits and training;*
- *Rapid Access Addiction Medicine (RAAM) Clinic, which provides fast access to alcohol and substance use counselling and withdrawal management medications; and*
- *Harm Reduction Worker to help navigate available services.*

Other services include:

- *monthly physician's clinic;*
- *foot care services;*
- *medical transportation;*
- *chronic disease prevention program for diabetes, heart disease, and cancer;*
- *communicable disease program to help control the spread of vaccine-preventable diseases;*
- *environmental awareness program, involving water sampling and testing for West Nile Virus;*
- *emergency response team; and*
- *workshops and activities aimed at promoting healthy living and wellbeing.*



COMPLETE LISTING OF PROGRAMS AND SERVICES

LEGEND



SERVICE / PROGRAM
PROVISION



LAND-BASED
PROGRAMMING



PHYSICAL / CLINICAL
HEALTH



MENTAL HEALTH
AND WELLBEING



CULTURAL WELLBEING



EDUCATION



FINANCIAL SERVICES /
SUPPORT



ENVIRONMENTAL
WELLBEING



SUPPORT FOR
CAREGIVERS



PREVENTATIVE CARE /
PROGRAMMING

HOUSING

229-33 Maadookii Cres.
Neyaashiinigmiing, ON N0H 2T0
519-534-1195

The purpose of the Housing Department is to ensure an improved housing program and future housing allocations. Services include:

- *recommendations regarding housing needs;*
- *overseeing construction of Band rental units as well as maintenance of Band rental units;*
- *supervision of any employees hired to carry out work;*
- *receipting of monies from mortgages/Band rentals;*
- *financial counselling;*
- *home inspections (mold, structural); and*
- *recommendations for septic.*



NIKENDAASOGAMIG ELEMENTARY SCHOOL

45 Farm Rd.
Neyaashiinigmiing, ON N0H 2T0
519-534-0719

Provides the following services and supports from Junior Kindergarten - Grade 8:

- *Ojibway language instruction;*
- *support for incorporating cultural education;*
- *wide range of special education support;*
- *"Daily Breakfast" and "Hot Lunch" programs for the winter months;*
- *land-based learning; and*
- *locally-developed social studies curriculum.*



COMPLETE LISTING OF PROGRAMS AND SERVICES

LEGEND



SERVICE / PROGRAM
PROVISION



LAND-BASED
PROGRAMMING



PHYSICAL / CLINICAL
HEALTH



MENTAL HEALTH
AND WELLBEING



CULTURAL WELLBEING



EDUCATION



FINANCIAL SERVICES /
SUPPORT



ENVIRONMENTAL
WELLBEING



SUPPORT FOR
CAREGIVERS



PREVENTATIVE CARE /
PROGRAMMING

LANDS / MEMBERSHIP

135 Lakeshore Blvd.
Neyaashiinigmiing, ON N0H 2T0
519-534-1077

The Chippewas of Nawash Lands Department manages and monitors land use for Band lands located at Neyaashiinigmiing Reserve #27, Hunting Grounds 60B, Fishing Islands and other properties held and/or acquired by the Chippewas of Nawash Unceded First Nation. The Lands Department also assists Band members with boundary location and deals with wills and estates.



LANGUAGE NEST

6 Harbour Road
Neyaashiinigmiing, ON N0H 2T0
519-534-3572

Anishinaabemowin Naaknigewin was established in 2011 with the mandate of helping to develop a multi-year strategic plan for the promotion and revitalization of our Indigenous Language and skills.



MAADOOKII SENIOR'S GROUP

125 Maadookii Cres.
Neyaashiinigmiing, ON N0H 2T0
519-534-4918

The Maadookii Centre offers services and activities for seniors, including:

- home visits;
- snow removal and light repairs
- Native crafts;
- games (cards, bingo, scrabble) & entertainment;
- socials and other gatherings;
- day trips (the Centre has its own wheel-chair accessible bus);
- Ojibway language classes;
- support to travel to language conferences; and
- interaction with other people and programs on reserve.



COMPLETE LISTING OF PROGRAMS AND SERVICES

LEGEND


 SERVICE / PROGRAM PROVISION

 LAND-BASED PROGRAMMING

 PHYSICAL / CLINICAL HEALTH

 MENTAL HEALTH AND WELLBEING

 CULTURAL WELLBEING

 EDUCATION

 FINANCIAL SERVICES / SUPPORT

 ENVIRONMENTAL WELLBEING

 SUPPORT FOR CAREGIVERS

 PREVENTATIVE CARE / PROGRAMMING

MEMBERSHIP DEPARTMENT

**135 Lakeshore Blvd.
Neyaashiinigmiing, ON N0H 2T0
519-534-1689**

Assists Band members with:

- *clan management;*
- *estate management;*
- *family deaths;*
- *birth and marriage registrations;*
- *identifying right to registration;*
- *tracing family; and*
- *people living with disabilities*



M'WIKWEDONG INDIGENOUS FRIENDSHIP CENTRE

**1045 3rd Ave. West
Owen Sound, ON N4K 5W6
519-371-1147**

M'Wikwedong has several programs that cover a variety of ages, including prenatal care, infants, children, pre-teens, and elders.



NATIVE CHILD WELFARE

**23 Lighthouse Rd.
Neyaashiinigmiing, ON N0H 2T0
519-534-3818**

Community-based early intervention, and prevention services, including: placements for children in need; land-based programming for spiritual, mental, physical, and emotional wellbeing; and support programs for children, youth and their caregivers.

Offers a variety of youth programming such as:

- *teen drop-in nights;*
- *education on culture, spirituality, physical health, and mental health;*
- *parent support circle;*
- *support to substitute parents; and*
- *support to foster parents.*



COMPLETE LISTING OF PROGRAMS AND SERVICES

LEGEND



SERVICE / PROGRAM
PROVISION



LAND-BASED
PROGRAMMING



PHYSICAL / CLINICAL
HEALTH



MENTAL HEALTH
AND WELLBEING



CULTURAL WELLBEING



EDUCATION



FINANCIAL SERVICES /
SUPPORT



ENVIRONMENTAL
WELLBEING



SUPPORT FOR
CAREGIVERS



PREVENTATIVE CARE /
PROGRAMMING

NEYAASHIINIGMIING POLICE

202 Port Elgin Rd.
Neyaashiinigmiing, ON N0H 2T0
519-534-1233

Provides services and involvement in:

- law enforcement;
- crime prevention; and
- community service.



NINDA-KIKAENDJIGAE-WIGAMMIK LIBRARY

25 Maadookii Subdivision
Neyaashiinigmiing, ON N0H 2T0
519-534-1508

In partnership with other community programs, our public libraries contribute to our social and economic wellbeing by nurturing our spirits, preserving our traditions, cultures and languages, and encouraging lifelong learning and literacy. The library also provides mobile service.



NSHIIME CHILD & FAMILY CENTRE

255 Prairie Rd.
Neyaashiinigmiing, ON N0H 2T0
519-534-3909

Provides daycare and other programming such as:

- *Journey Together: programming helping families of children 0-6;*
- *organizing community events;*
- *supporting early childhood educators and others who work with children ages 0-6;*
- *hosting a parenting group;*
- *partnering with a youth group that meets regularly; and*
- *child assessments.*



COMPLETE LISTING OF PROGRAMS AND SERVICES

LEGEND



SERVICE / PROGRAM
PROVISION



LAND-BASED
PROGRAMMING



PHYSICAL / CLINICAL
HEALTH



MENTAL HEALTH
AND WELLBEING



CULTURAL WELLBEING



EDUCATION



FINANCIAL SERVICES /
SUPPORT



ENVIRONMENTAL
WELLBEING



SUPPORT FOR
CAREGIVERS



PREVENTATIVE CARE /
PROGRAMMING

POST-SECONDARY EDUCATION SERVICES

**6 Harbour Rd.
Neyaashiinigmiing, ON N0H 2T0
519-534-0882**

Provides a funding assistance program for people attending post-secondary institutions (e.g. college, university). This program assists with post-secondary registration and helps post-secondary students troubleshoot issues regarding school. This program is offered through the Department of Education.



PUBLIC WORKS

**24 Community Centre Rd.
Neyaashiinigmiing, ON N0H 2T0
519-534-1036**

Provides services related to:

- roads;
- water (including feasibility studies); and
- buildings (including ensuring they are to code).



RECREATION

519-379-0920

Increases participation opportunities by supporting communities to provide sport, recreation and physical activity programs suitable to the needs and interests of all.

Increases community capacity by providing skill development and leadership development opportunities to members of the community.



COMPLETE LISTING OF PROGRAMS AND SERVICES

LEGEND



SERVICE / PROGRAM
PROVISION



LAND-BASED
PROGRAMMING



PHYSICAL / CLINICAL
HEALTH



MENTAL HEALTH
AND WELLBEING



CULTURAL WELLBEING



EDUCATION



FINANCIAL SERVICES /
SUPPORT



ENVIRONMENTAL
WELLBEING

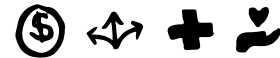


SUPPORT FOR
CAREGIVERS



PREVENTATIVE CARE /
PROGRAMMING

NAWASH SOCIAL SERVICES



33 Maadookii Cres., Suite 105

Neyaashiinigmiing, ON N0H 2T0

T: 519-534-3753 | F: 519-534-1501 | E: clientsupport@nawashfn.ca

Administers the following programs, services, and supports:

- *Ontario Works program, which offers social assistance to those in financial need, and other employment services;*
- *Addiction Services Initiative, which offers life stabilization and employment supports to individuals on Social Assistance struggling with addiction;*
- *support for individuals seeking Ontario Disability Support Program (ODSP);*
- *services for budgeting and job training;*
- *transitional support funding for low-income, on-reserve households with housing disconnections and minor repairs; and*
- *financial support for funerals and burials.*



SOUTHWEST ONTARIO ABORIGINAL HEALTH ACCESS CENTRE (SOAHAC)



733 9th Avenue East, Unit 3

Owen Sound, ON N4K 3E6

519-376-5508

Supports and programs include:

- *adult mental health and addictions services;*
- *child and youth mental health and addictions services;*
- *clinical services;*
- *Supporting Aboriginal Seniors at Home (SASH);*
- *tele-mental health for children and youth; and*
- *traditional healing.*



COMPLETE LISTING OF PROGRAMS AND SERVICES

LEGEND

 SERVICE / PROGRAM PROVISION

 LAND-BASED PROGRAMMING

 PHYSICAL / CLINICAL HEALTH

 MENTAL HEALTH AND WELLBEING

 CULTURAL WELLBEING

 EDUCATION

 FINANCIAL SERVICES / SUPPORT

 ENVIRONMENTAL WELLBEING

 SUPPORT FOR CAREGIVERS

 PREVENTATIVE CARE / PROGRAMMING

WATER TREATMENT AND DISTRIBUTION

**85 Community Center Rd.
Neyaashiinigmiing, ON N0H 2T0
519-534-4599**

Provide supports including:

- *water treatment;*
- *fixing pipes;*
- *assistance with water tests;*
- *help with new water plant;*
- *contributions to community events (e.g. bringing water); and*
- *building a water treatment training centre for First Nations.*



WELLNESS CENTRE

**Temporary Location:
Health Centre, 247 Prairie Rd.
Neyaashiinigmiing, ON N0H 2T0
519-534-3764**

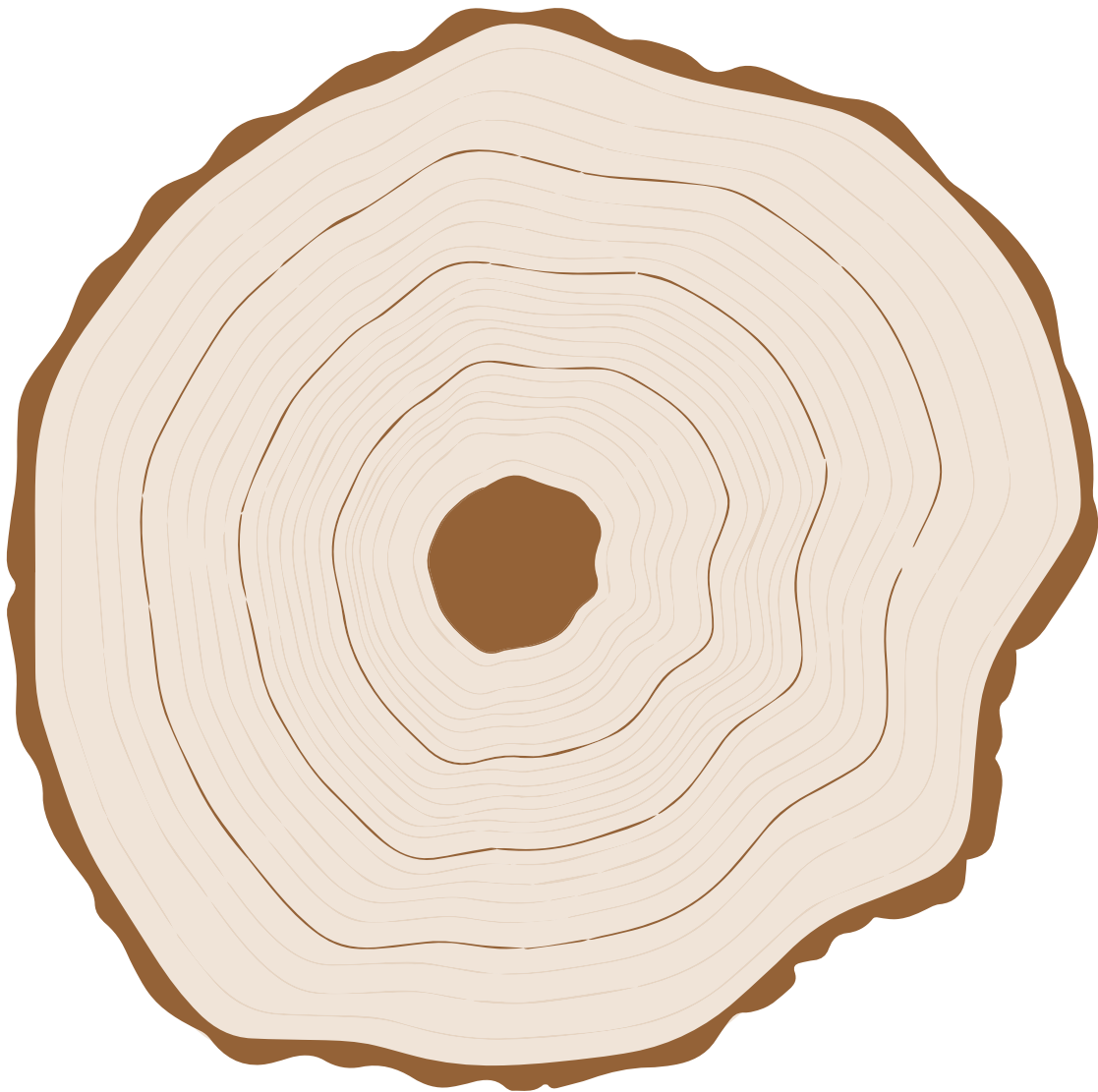
**Permanent Location:
376 Sydney Bay Rd.
Neyaashiinigmiing, ON N0H 2T0
519-534-0373**

Offers preventative programs and crisis intervention through:

- *individual and group sessions;*
- *mental health and addictions supports and referrals;*
- *mental health and addiction education;*
- *access to outside supports such as residential treatment, detox, and hospital supports;*
- *cultural mentoring and supports;*
- *traditional medicine supplies and supports;*
- *school visits and counselling supports for children and youth;*
- *social events; and*
- *traditional crafting sessions.*



APPENDIX A: PROGRAMS AND SERVICES ORGANIZED BY LIFE STAGE



APPENDIX B: CASE STUDIES

The purpose of the case studies are to use realistic scenarios for training or orientation (or something else) to encourage people to think about how they might...

- *Refer people to the most appropriate or available service, support, or program;*
- *Use the asset map or directory;*
- *Partner or collaborate with another service or program; and/or*
- *Suggest or provide options to the friend or family member that is struggling.*



CASE STUDIES

CASE STUDY 1

Someone in your family has been struggling with drug addictions for many years and has been court ordered to go to a rehabilitation facility in Owen Sound. This family member has not talked to you about their drug addition in the past. As part of the court ordered rehabilitation process, your family member must also complete courses with a counselor. The counselor only visits Nawash once a week, and there is a wait list for their help. You are really worried about them. You found out they are on the waitlist through this family member's partner who wants them to follow through with this counselling. You want to do what you can to keep your family member on track to complete the courses with their counsellor.

Discussion Question 1: What are the best supports available in the community to assist this community member with their courses when they return from the rehabilitation facility?

Discussion Question 2: What aftercare supports are available or possible, after they are done with the courses and rehab?

CASE STUDY 2

A senior with arthritis who lives near to you has been struggling with accessibility in their home, and they require bathroom renovations to meet their physical needs. They have other family members that sometimes live with them but they are not able to finance or do the renovations themselves. The senior does not have access to internet and are unaware of who to contact for assistance.

Discussion Question 1: Which program or service should this senior reach out to in order to assist with funding and/or renovations to their bathroom?

Discussion Question 2: How can seniors in Nawash with limited access to supports be aware of the programs and services available to them?

CASE STUDY 3

You run into a 17-year-old teen (family is from Chippewas of Nawash but he lives off-reserve) you recognize at the gas station. You haven't seen him in a while and ask what he is up to and he shares that he wants to apply for college but isn't convinced that he can afford to go. He's thinking of postponing applying until he can sort out money. You ask him more questions and find out that he does not have the money to pay for the OCAS application fee. Since he does not live on-reserve, he is not eligible for funding through the Secondary Student Counsellor Program.

Discussion Question 1: How and where can this student apply for funding for the application before the deadline in February?

FOR MORE INFORMATION, PLEASE CONTACT:

Chippewas of Nawash Band Manager of Operations:

- Email operationsmanager@nawash.ca
- Call 519-534-1689

Communications Manager:

- Email communications@nawash.ca
- Call 519-534-1689

Project Lead:

- Email Melody Morton Ninomiya at mmortonninomiya@wlu.ca

For a complete list of Band Programs and their contact information, please visit www.nawash.ca/contact/:

